

Quick Start Reference

This 13-step summary will get you started with a simple map. It assumes you have already made a full, default installation of the program, and one of the CDs is in your CD-ROM drive. (Complete installation instructions begin in Sec. 2.) For more detailed explanations, read through the lessons in Sec. 3. Before you start, make sure your LEI MMC card reader is installed and working, and you know the reader's drive letter. *Many toolbar buttons are labeled, and an informative tool tip box pops up when you point to a button.*

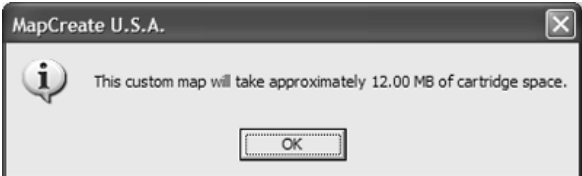
How to make and save a rectangle map

1. Start MapCreate by clicking the Windows **START** button and choosing your version of **MAPCREATE** from the menu.
2. Maneuver the Master Map so you can see the area you want to in-

clude in your map. Use the **PAN ARROW** buttons to move north, south, east or west. Use the **ZOOM-IN** and **ZOOM-OUT (Z-IN or Z-OUT)** buttons as needed to close in on or back away from the area you're viewing.

3. Click the **DRAW MAP BORDERS** button in the toolbar. Move the mouse pointer above and to the left of the desired area. Click, *hold down* the mouse button and drag diagonally down and to the right until the desired area is enclosed with the green border box. Then release the mouse button. You have just drawn a Map Border.

4. With the Map Border displayed, click the **ESTIMATE CUSTOM MAP SIZE** button, on the Create Map toolbar. After a moment it will tell you your map's file size. If it fits the card, click **OK** to clear the message and jump to step 5. If the map file is too large for the card, click **OK** to clear the message, then redraw your map border a little smaller. Click the **DELETE MAP BORDER** button, click on any green border line, then re-draw a smaller border box. Use the Estimate button to re-check the size until it is correct.



Click the **OK** button to clear the message box from your screen.

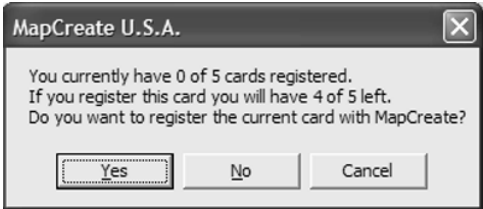
5. When your file is the right size, click the **CREATE MAP** button on the Create Map toolbar. The program displays a message about copyright and encryption.

6. If this is the first time you have tried to save a file to your memory card, MapCreate will need to register the card. Make sure you have a card in your card reader. Click **OK** to continue. (Clicking Cancel ends the process.) If you have already registered the card you are using, click **OK** and skip to step 11.



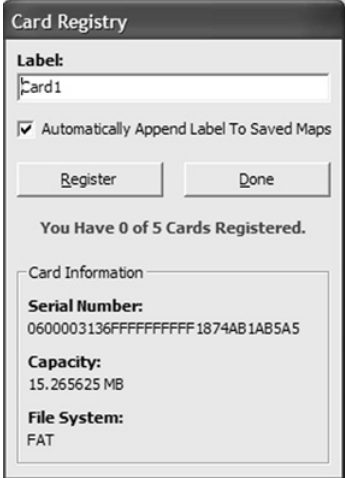
Read the message, and then click **OK** to continue.

7. Another message box asks whether you want to register your current card or not. Click **YES** to continue the card registration process.



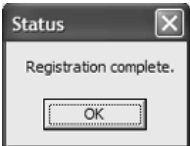
Click **Yes** to register your current memory card with MapCreate.

8. You can change the label on your memory card if you prefer. Delete the default name, "Card1," and enter the new *name*. Click **REGISTER** to continue.



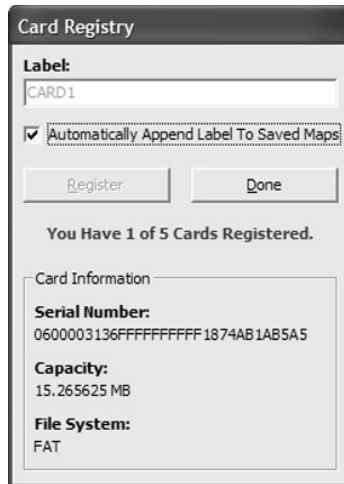
Delete the default label, if you prefer, and enter a new name. Then click **Register** to continue.

9. Another message box tells you when your card has been registered. Click **OK** to continue.



Click **OK** to continue the create map process.

10. The Card Registry window appears again. Click **DONE** to save your map.



Click Done to complete the registry process.

NOTE:

If the **AUTOMATICALLY APPEND LABEL TO SAVED MAPS** box is selected (see figure above), MapCreate will automatically add your card's label to the end of whatever name you give the file you are saving. Let's use the figure above as an example. If we name our map "*Phoenix.lcm*," MapCreate will automatically name the file "*Phoenix_CARD1.lcm*." To cancel this option, click the Automatically Append... box to remove the check mark.

11. A window shows the progress of your map build. When the map is built, MapCreate displays the **SAVE AS** dialog box. Type a file *name* for your Map File, and click **SAVE**. (MapCreate will save your new custom map to your memory card.)

12. After the program has saved the map to your card, the Save Progress box disappears. You can now close MapCreate and remove the card from the reader.

13. Follow the instructions in your GPS manual for loading the MMC or SD card into your unit. It will automatically read the map when the unit is turned on.

NOTE:

Custom maps and GPS data (waypoints, routes, trails, icons) are contained in two *different* file types. We describe their functions in the following segments on how the program works.